

Power Ranch Well – Irrigation System

WELL 5



Ranch House Lake



WELL 6



Barn Lake



WELL 7



Water is pulled from 700 feet deep and is pushed over 2 miles to the two community lakes.

Each lake is 18' deep with 2.1 acres of surface area.

An Olympic swimming pool holds 660,000 gallons of water.

The Landscape at Power Ranch requires over 450 Olympic pools worth of water each year.

Pump Station

A chemical injection system at each pump station promotes plant health.

Pump Station

Over 280 acres of landscape is maintained in Power Ranch.

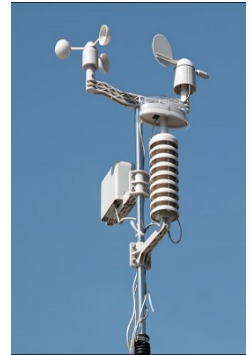
Power Ranch uses 297 million gallons of water annually.

Annual water usage is more than the area to fill the Empire State Building.

Over 3,000 individual valves throughout the community.

AZ Dept. of Water Resources allotment for Power Ranch is 1,250 acre feet annually.

Power Ranch uses approx. 925 acre feet of water annually over the past 15 years.



Weather Station Measures

- Solar Radiation
- Humidity
- Wind Conditions
- Daily Precipitation Data

